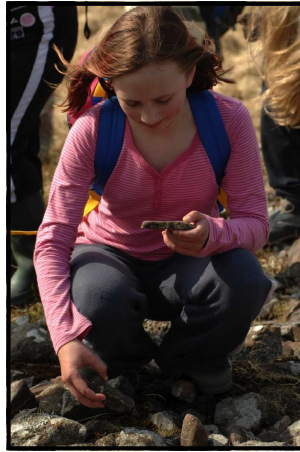


### Fforest Fawr Geopark Rock and Sediment resource chest.

In order to help schools understand more about the Fforest Fawr Geopark and to teach geology in a fun and interactive way, the Education Team have put together 3 Rock and Sediment Resource Chests. The Resource Chests include samples of the four main rock types that make up the Fforest Fawr Geopark and the sediments which formed the rocks millions of years ago. The Resource Chest also includes an education pack containing lesson plans and photocopyable pupil material relating in particular to Attainment Target 1, Scientific Enquiry and Attainment Target 3, Materials and their Properties. The bilingual worksheets within the education pack are aimed at Key Stage 2, however may be adaptable for younger or older pupils. The education pack also includes useful contacts, websites and places to visit within the Fforest Fawr Geopark. For further information or to make a booking to borrow the Resource Chest please contact either [eleri.jones@breconbeacons.org](mailto:eleri.jones@breconbeacons.org) 01639 730395 or [linda.harley@breconbeacons.org](mailto:linda.harley@breconbeacons.org) 01874 620463

### Geopark Fortnight at Craig-y-nos Country Park.

During the spring term 9 local schools and 1 Home Educated Group were fortunate to visit Craig-y-nos Country Park to learn about the Geology of the Geopark. The schools were offered free transport and a free place on the courses. Some school and the home educated group opted for the Geological Timetrail course which took part on the nearby disused Cribarth quarry. During the course the pupils went back 400 million years to find out about the four main rock types of the Geopark.



Other schools opted for the Up and Under course. The morning session included an upland walk across the Cribarth mountain to investigate limestone features and to discuss the impact of farming, tourism, quarrying, forestry and early people have had on the land. The afternoon session included a guided walk through Dan-yr-Ogof showcave where pupils were given the opportunity to discover and investigate underground limestone features which related to the surface processes described during the walk across the Cribarth.

If you would like to learn more about the Geopark please contact the National Park on: 01874 624437



# School Update Summer 2007

## Issue 5

### FREE EDUCATION SERVICE KICKS OFF NATIONAL PARK 50th CELEBRATIONS

Five local schools enjoyed a week of FREE Education Programmes at Craig-y-nos Country Park this week to help kick off Brecon Beacons National Park's 50<sup>th</sup> Anniversary celebrations.

Throughout the week (12<sup>th</sup> -16<sup>th</sup> March) schools have been provided with free transport and free education activities delivered by Brecon Beacons National Park Authority's Education team members – delivered in both Welsh and English.

During the morning pupils were taken on a walk across the Cribarth Mountain discussing and observing the special qualities of the National Park. They also had to follow maps to discover natural and man-made landscape features such as shake holes, limestone pavement, standing stones, quarries, farmlands, moorland and forestry plantations.

During the walk they also had the opportunity to discuss the effects of tourism on the landscape and the important role the National Park plays in protecting



and conserving the special area in which the pupils live.

In the afternoon they got involved with fun and interactive activities which promoted working in teams to think about sustainability, and the pupils' visions for the next 50 years of the Brecon Beacons National Park.

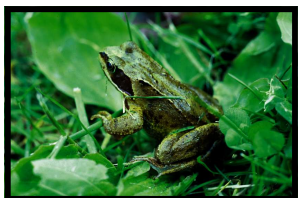
Examples of pupils work can be seen in 50<sup>th</sup> Anniversary exhibitions later in the year and they will also contribute to the new National Park Management Plan.

Two more weeks of free education visits (with transport provided) are being offered between the 18<sup>th</sup> – 22<sup>nd</sup> June at the National Park Visitor Centre (fully booked) and 19<sup>th</sup> – 23<sup>rd</sup> November at the YHA Danywenallt National Park Study Centre. For more information about these weeks and the National Park Education Service please contact Linda Harley 01874-620463.



Can you find the following creepy crawleys hidden in the Wordsearch below:

- FROG
- SLUG
- MOTH
- SPIDER
- WORM
- ANT



M	E	F	R	O	G
O	W	O	R	M	D
T	K	A	G	L	T
H	J	U	S	N	F
N	L	Q	A	O	I
S	P	I	D	E	R



## Woodland sites for schools in Eastern Area of Brecon Beacons National Park

If you would like to take your class for a visit to beautiful woodland habitats and have the opportunity to learn through hands on activities about the National Park, trees and the wildlife with an Education Officer, there are 2 suitable sites.

Llangattock Beechwoods (KS1-4) near Crickhowell managed by the National Park and Coed y Cerrig (KS2-4) near Fforest Coal Pit near Abergavenny managed by the Countryside Council for Wales. Please contact the National Park Education Service on 01874 620463.

## Successful school grounds course held in Brecon.

Brecon Beacons National Park Education Officer Hayley Sharp recently ran a school grounds course for local teachers at Mount Street Infants School. Organised in partnership with Careers Wales, the day focussed on planning, maintaining and using school grounds to their full potential with a special emphasis on Foundation Stage pupils. Hayley was joined by Gareth Ellis, the National Park's Biodiversity Officer and Claire Davies, Powys County Council's Recycling Officer and teachers were able to gain ideas, tips and resources not only from the experts but also from each other.

## Green Flags



**Congratulations to all the following schools who have worked hard to gain their Eco schools Green Flag (List)**

1st Flags: Beguildy, Llanidloes, Llanigon

2nd flags: Crickhowell High School, Talgarth, Ysgol Cynlais

## Wales Biodiversity Week (9<sup>th</sup> -17<sup>th</sup> June )

During this week and all over the summer there are lots of Events to learn about the huge variety of wildlife we have in Wales. There are too many to list here but if you look on the website:

[www.biodiversitywales.org.uk](http://www.biodiversitywales.org.uk) you will be able to find out where to become batty about bats, mad about moths, go on a porpoise picnic or a dolphin watch.

